

MODEL 95 series

OPEN-FRAME ORBITAL WELD HEADS WITH WIRE FEED



The widest range of orbital welding equipment in the world

The Model 95 series is a family of economical, easy to use, robust welding heads featuring precise but rugged mechanics. It is ideal for welding small diameter pipes and fittings that have limited axial and/or radial clearance or require a high productivity (quick set-up) type of welding head.

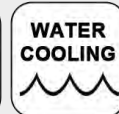
The arc length and torch cross-seam positions are manually controlled. The Model 95 weld heads use an off-board wire feeder and an adjustable mounting system. They can be used as fusion weld heads or with a wire feeder. Several torch options are available for a variety of welding applications. Model 95 series weld heads are versatile and compatible with a variety of joint designs, such as "J" prep, socket and square butt. They will weld materials ranging from stainless steels or carbon steels to exotic alloys like Hastelloy™, Inconel™ and Monel™ as well as all other GTAW (TIG) weldable materials. Root passes may be done fusion-only, with filler wire, or with the use of insert rings. Autogenous welds (without filler metal) with 100% penetration may be done on wall thicknesses up to 0.154" (3,9 mm) depending on the alloy.



QUICK SPECS

	Model 95-1250	Model 95-1500	Model 95-2375	Model 95-3500	Model 95-6625
Torch	200 A water-cooled	200 A water-cooled	200 A continuous duty water-cooled	200 A continuous duty water-cooled	200 A continuous duty water-cooled
Wall Thickness	up to 0.3" (7,6 mm)	up to 0.3" (7,6 mm)	up to 0.4" (10 mm)	up to 0.4" (10 mm)	up to 0.4" (10 mm)
Rotation Speed	0.05 - 10.0 RPM	0.05 - 10.0 RPM	0.1 - 5.0 RPM	0.05 - 2.0 RPM	0.05 - 2.0 RPM
Torch Adjustments lead / lag cross-seam	+/- 5° +/- 0.25" (6,35 mm)	+/- 10° "B" torch: +/- 0.50" (12,7 mm) "C" torch: +/- 0.25" (6,35 mm)	+/- 5° +/- 0.5" (12,7 mm)	+/- 10° +/- 0.5" (12,7 mm)	+/- 10° +/- 0.5" (12,7 mm)
Weight (less cables)	5 lbs. (2,3 kg)	5.5 lbs. (2,5 kg)	8 lbs. (3,6 kg)	13 lbs. (5,9 kg)	16 lbs. (7,3 kg)

➔ **Compatible Power Supplies:**
AMI Model 227, Model 307 and Model 415 or the
AMI Model 207 for fusion only with an optional adapter.



www.arcmachines.com

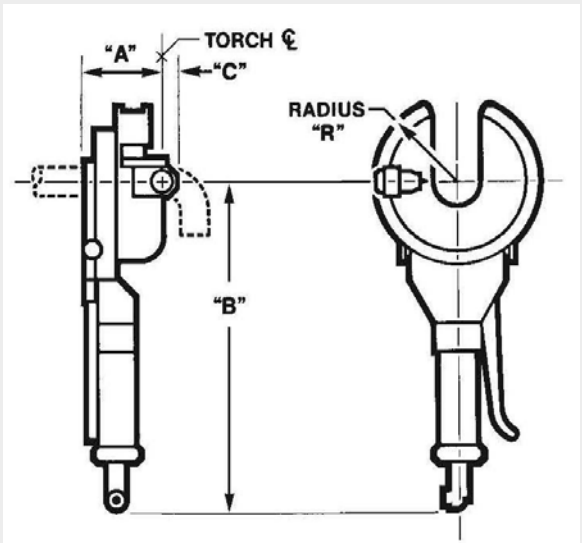
sales@arcmachines.com

MODEL 95 SERIES

OPEN-FRAME ORBITAL WELD HEADS

DIMENSIONS

Weld Head Model #	Tube/Pipe OD Range	Dimensions			
		A	B	C	R
95-1250 Special Torch	0.75"-1.00" 19 mm - 25 mm	3.00" 76 mm	8.56" 217 mm	0.74" 19 mm	1.81" 46 mm
95-1500 "C" torch	0.625" - 1.50" 16 mm - 40 mm	3.60" 92 mm	15.95" 405 mm	0.46" 12 mm	2.17" 56 mm
95-1500 "B" torch	0.625" - 1.50" 16 mm - 40 mm	3.81" 97 mm	15.95" 405 mm	0.63" 16 mm	3.38" 86 mm
95-1500 45° tilt	0.625" - 1.50" 16 mm - 40 mm	4.91" 125 mm	15.95" 405 mm		2.17" 55 mm
95-2375	0.75" - 2.375" 19 mm - 61 mm	3.75" 95 mm	16.26" 412 mm	0.62" 16 mm	3.95" 100 mm
95-2375 45° tilt	0.75" - 2.375" 19 mm - 61 mm	4.98" 126 mm	16.26" 412 mm		3.94" 100 mm
95-3500	1.00" - 3.50" 25 mm - 90 mm	3.83" 97 mm	19.3" 490 mm	0.62" 16 mm	4.25" 108 mm
95-3500 45° tilt	1.00" - 3.50" 25 mm - 90 mm	5.05" 128 mm	19.3" 490 mm		4.25" 108 mm
95-6625	2.00" - 6.625" 50 mm - 170 mm	3.75" 95 mm	19.25" 489 mm	0.63" 16 mm	6.31" 160 mm
95-6625 45° tilt	2.00" - 6.625" 50 mm - 170 mm	5.12" 130 mm	19.25" 489 mm		6.31" 160 mm



The Model 95-WF wire feeder is a compact, portable unit ► designed specifically for use with all M95 series weld heads. It features precise and reliable wire feed speed control when used with AMI's Power Supplies.

Leaders & Innovators in

Automated Orbital Welding

For further information please visit our website
or contact us at 1-818-896-9556



AMI

ARC MACHINES, INC.®

www.arcmachines.com

sales@arcmachines.com

HEADQUARTERS
Arc Machines, Inc.

10500 Orbital Way
Pacoima, CA 91331 U.S.A.
Tel: +1 / 818 / 896 / 9556
Fax: +1 / 818 / 890 / 3724
sales@arcmachines.com

EUROPEAN BRANCH OFFICE
Arc Machines, Inc.

Chemin du Lavasson 2, CH-1196
Gland, Switzerland
Tel: +41 / 22 / 995 / 0051
Fax: +41 / 22 / 995 / 0059
sales@arcmachines.ch

GERMAN OFFICE
Arc Machines GmbH

Markelsbach 2
D-53804 Much, Germany
Tel: +49 / 2245 / 91680
Fax: +49 / 2245 / 916868
sales@arcmachines.de

UK OFFICE
Arc Machines UK Limited
Unit 2 Lampport Court
Heartlands Business Park
Daventry, NN11 8UF, UK
Tel: +44 / 1327 / 312787
Fax: +44 / 1327 / 315034
sales@arcmachines.co.uk